



OMA GHANA LTD

www.omagroup.com

TDC Towers, Second Floor
Salifu Dagati Extension
Community 2
P O Box SC441
Tema – Ghana

T +233 303 203 945/965

E shipagency.gh@omagroup.com

Last updated: 30/09/2022

PORT INFORMATION

TEMA, GHANA



- ◆ ISPS
- ◆ Port Information & Official Documents
- ◆ Tema Berths Post Description
- ◆ Berths Post Description
- ◆ Draft & LOA Restrictions in the Port
- ◆ Berths Post Description
- ◆ Port View

Geographical positions:	5° 37' 55" North 0° 0' 42" East
Density:	Tidal heights of 1.6 metres at MHWS and 1.3 metres at MLWS and 0.7 metres at MLWN are recorded twice daily. Water density 1.024
Security level:	1
Tema Port Database:	http://www.ghanaports.gov.gh
Port Facility Security Officer (PSFO)	Harbour Master: Capt. Francis K.B Micah Phone: +233 303 202631 - Ext. 3500 Mobile: +233 (0) 244167488 Email: kmicah@ghanaports.gov.gh Deputy: Col. Emmanuel Opare Nyante Phone: +233 303 219120 - Ext. 3800 Mobile: +233(0) 245607178 Email: prms@ghanaports.gov.gh Harbour Office: GPHA P.O. Box 488, Tema Fax: +233 303 204 136 Deputy Fax: +233 204 136 233

General Manager Port Operations:	Abraham Mensah Phone: +233 202 019 894 / +233 572 717 493 Email: amensah@ghanaports.net
Port Emergency Response & Support Fire / Safety Manager	Edward Evans Heyman Phone +233 303 202 631 Ext. 3900 Fax: +233 303 204 136 / +233 573518177 Email: eheman@ghanaports.gov.gh / eddymore16@yahoo.com
Port Medical Emergency	Head of Medical Service Dr. Vitus Anaab-Bisi Phone: +233 303 204 416 / +233 303 202 653 / +233 303 202 715 Fax: +233 303 204 136
Ghana Police Service	+233 303 203 850
Ghana Customs Exces & Preventive Service	+233 303 202 667
Ghana Immigration Service	+233 303 202 552
Eastern Naval Command (COMD. OPS. OFFR.)	+233 303 202 434

PORT INFORMATION & OFFICIAL DOCUMENTS

ANCHORAGE

There is good anchorage between 1.5 km to 4 km ENE to SW off the main harbour entrance in depths of 9 metres to 18 metres with good holding ground. The E area of the anchorage is most suitable without additional swell reflected from the main breakwater.

APPROACH

Harbour entrance is 240 metres wide with a depth of 12.5 metres. A heavy swell may be encountered at 400 to 600 metres from harbour entrance during the monsoon season from April to September which causes vessels to roll heavily up to 40-80. For this reason, deep draught vessels enter only at high tide to obtain sufficient keel clearance.

ARRIVAL

The port requires advance notice of 72 hours prior to estimated time of arrival (ETA) – before 14.30 hours on Monday to Thursday and before 10.00 hours on Friday for weekend working.

BUNKERS

Can be received at the wharf/berth by tracks. Kindly placed an order and we will help with supply.

BUSINESS HOURS

The port is open seven days a week, all year round, except on Christmas Day and Good Friday when ships are handled only in emergency. Overtime rates apply on Saturdays, Sundays, public holidays and during lunch breaks. Main working hours are 07.30-12.30 hours GMT. Two or three shifts can be worked at the request of the vessel.

RADIO

The port maintains a 24 hour watch on VHF Channels 14 and 16 and any other convenient channel. This signal station can reach vessels 140 km away. During harmattan conditions, vessels can hear the signal 400 km from port. The Port of Tema is linked with the Global Maritime Distress and Safety System (GMDSS).

TOWAGE

Towage is compulsory within the harbour. The port authority operates four tugs: two of 1,866 kW, one of 1,860 kW and one of 1,644 kW. All tugs are fitted with pumps and monitors for fire fighting.

STORAGE

Tema port has 77,200m² of paved area for the storage of containers, steel products and other conventional cargo. The closed storage area, which is about 25,049m² (2.51 hectares), consists of six (6) sheds with a total storage capacity of 50,000 tonnes of cargo.

WEATHER

Light to strong breezes from W and SW throughout the year except from December- February when the NE harmattan dominates, causing poor visibility. Dangerous winds are tornadoes from E during May-July. There is a swell in the harbour, especially after tornadoes which requires about 0.5 metres under the ship's keel when lying alongside the wharves.

DOCUMENTS CHECK LIST FOR PORT FORMALITIES

DOCUMENTS AND NUMBER OF COPIES

- ◆ Maritime Declaration of Health 2
- ◆ Vaccination Lists (Cholera and Yellow Fever Certificates) 2
- ◆ Crew List 6
- ◆ Passenger List 6
- ◆ Ports of call list 6
- ◆ Stowaways list 2
- ◆ Manifest 6
- ◆ Tobacco, Spirits and Personal Effects 3
- ◆ Dangerous Cargo List 2
- ◆ Bonded Stores Lists 3
- ◆ Arms and Ammunition 3
- ◆ Last Port Clearances 7
- ◆ Drugs/Narcotics (including sickbay drugs) Lists 2
- ◆ Animals Lists 2
- ◆ Mail/Parcels Lists 3
- ◆ Nil Lists 3

TEMA BERTHS - INSIDE THE PORT

Berth N°	Berths	Length (m)	Draught (m)	Other restrictions	Observations
1	Container terminal	299	11.2	For Containers vessel only	The terminal is Managed by Meridian Port Services and the discharge is by gantry crane
2	Container terminal	275	11.4	Max length of V/LS to berths = 245 m	
Max draft of V/LS to berths =11.2 m	Spaces between bollards at Quay 1 are approx. 30m. Spaces between bollards at Quay 2 extension are generally variable.		210	12	
3	Deeper Draft Vessels including containers and dry bulk and general cargo vessels	228	10.0	Deeper vessels	Vesels light up and move to other berth
4	Container Ships	181	9.2		
5	Fishing Vessel	183	8.5		
6	Reefer & General Cargo Vessels	183	8.2		
7	Bulk cargo	183	7.5		
8	Tankers vessel carring alcohol and Oil palm	183	8.2	Priority to palm oil vessel and alcohol	Multipurpose berth / liquid bulk
9	Fruit terminal (banana, pineapple, orange)	183	8.2	Reefer cargo have priority	Multipurpose berth
10	Containers, bulk and bagged and the cargos	183	8.2	Multipurpose berth 10 Containers, bulk and bagged and the Fertilizer berth	Multipurpose berth
11	Mineral berth (Clinker, bulk carrier)	183	8	Mineral discharge berth	
12	Multipurpose berth	220	8.2	Navy vessel and reefer vessel berth	Newly constructed berth bulk terminal
13	Multipurpose berth	220	8.2	Ro-Ro vessel berth	Newly constructed berth bulk terminal
14	Bulk Cargo, Bagged cargo	220	8	Bulk Cement berth	Newly constructed berth bulk terminal
15	Multipurpose berth	220	8	Reefer vessel, small tanker, multipurpose vessel	Newly constructed berth bulk terminal
16	Multipurpose berth	75	8	Small vessel berth	Newly constructed berth bulk terminal
Valco berth	Private berth (Valco berth)	175	9.6	Alluminium products	
Oil berth	Tankers	Max 244	9.6		Cargo : butane / jet 1A / gas oil / crude oil / LPG
TERMINAL 3					
17	Container Terminal	350	16	For Container vessels only	Terminal 3
18	Container Terminal	350	16	For Container vessels only	Terminal 3
19	Container Terminal	300	16	For Container vessels only	Terminal 3
20	Container Terminal	400	16	For Container vessels only	Terminal 3

TEMA BERTHS - OUTSIDE THE PORT - OFFSHORE TERMINAL

	Description	Size (d.w. tonnes)	LOA (m)	Beam (m)	Draft (m)
CALM (SPM) For Crude	Approximately 3.2 n.m. offshore Position; Lat. 05° 37.75 N Long. 000°04.56 E in water Depth 25.0 m (LAT) to 27.0m. (HAT), connected to the Tema Oil Refinery (TOR) tank farm by a 36 in. diameter, 3.2 n.m. subsea pipeline.	± 60,000 – 155,000	204 – 274	50.0	20.0
CBM (ABB) For Products	Approximately 2.7 n.m. offshore with the PLEM, located in Position, Lat. 05° 37.92N, Long. 000° 04.20 E, connected to the tank farm by a 2.1 n.m. × 18 in. diameter subsea pipeline in water depth 18.0–20.0 m.	20,000 – 50,000	155 – 203	22.0 – 32.2	12.2

BERTHS POST DESCRIPTION

GHANA STS ZONE

Description

STS rendezvous position (zone) at Tema, have following coordinate

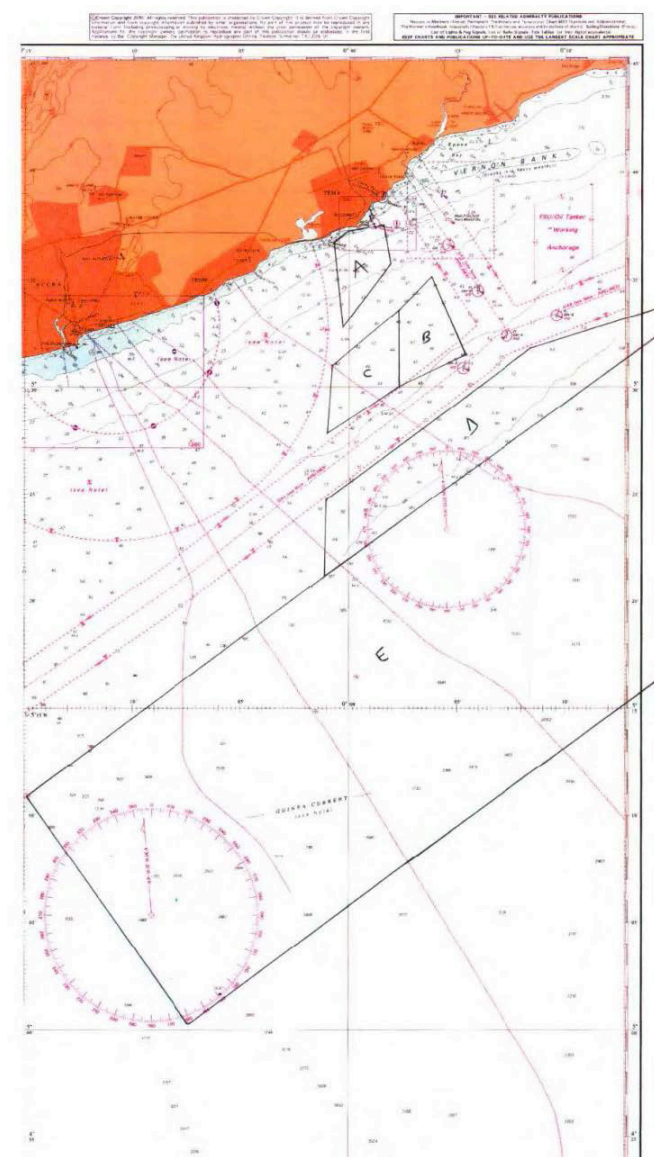
Position (A) LAT 05O 29''.00N
LONG 000O 04'.00E

Position (B) LAT 05O 32''.00 N
LONG 000O 09'.00E

Position (C) LAT 05O 30''.00 N
LONG 000O 11'.00E

Position (D) LAT 05O 27''.00 N
LONG 000O 06'.00E

Oil & Marine Agencies (OMA Ghana) is Managers of the STS Zone



DRAFT & LOA RESTRICTIONS IN THE PORT

NOTES

- 1. Max. LOA for Berths 1 &2 shall be up to 265.0m
- 2. Max. LOA for Berths 3 & 4 shall be up to 260m
- 3. Max. LOA for Berths 9,10 and 11 shall be up to 240m
- 4. Max. LOA for Berths 17, 18, 19 and 20 shall be up 367m

BERTHS POST DESCRIPTION

FISHING PORT

The Fishing Harbour comprises the Inner Fishing Harbour, the Canoe Basin, and the Outer Fishing Harbour. Details indicated below:

Inner Fishing Harbour

- ◆ Mooring facility of total quay length of 467 metres (caters for 8 vessels of 54 metres length overall)
- ◆ Finger Jetty approximately 60metres long
- ◆ Lay-by jetty of 155 metres
- ◆ Net-mending/Lay by wharf of 100 metres
- ◆ Protective water area of approx. 10.0 hectares
- ◆ Depth ranges between 3.5- 4.0 metres (Chart Datum)
- ◆ Entrance is 63 metres wide

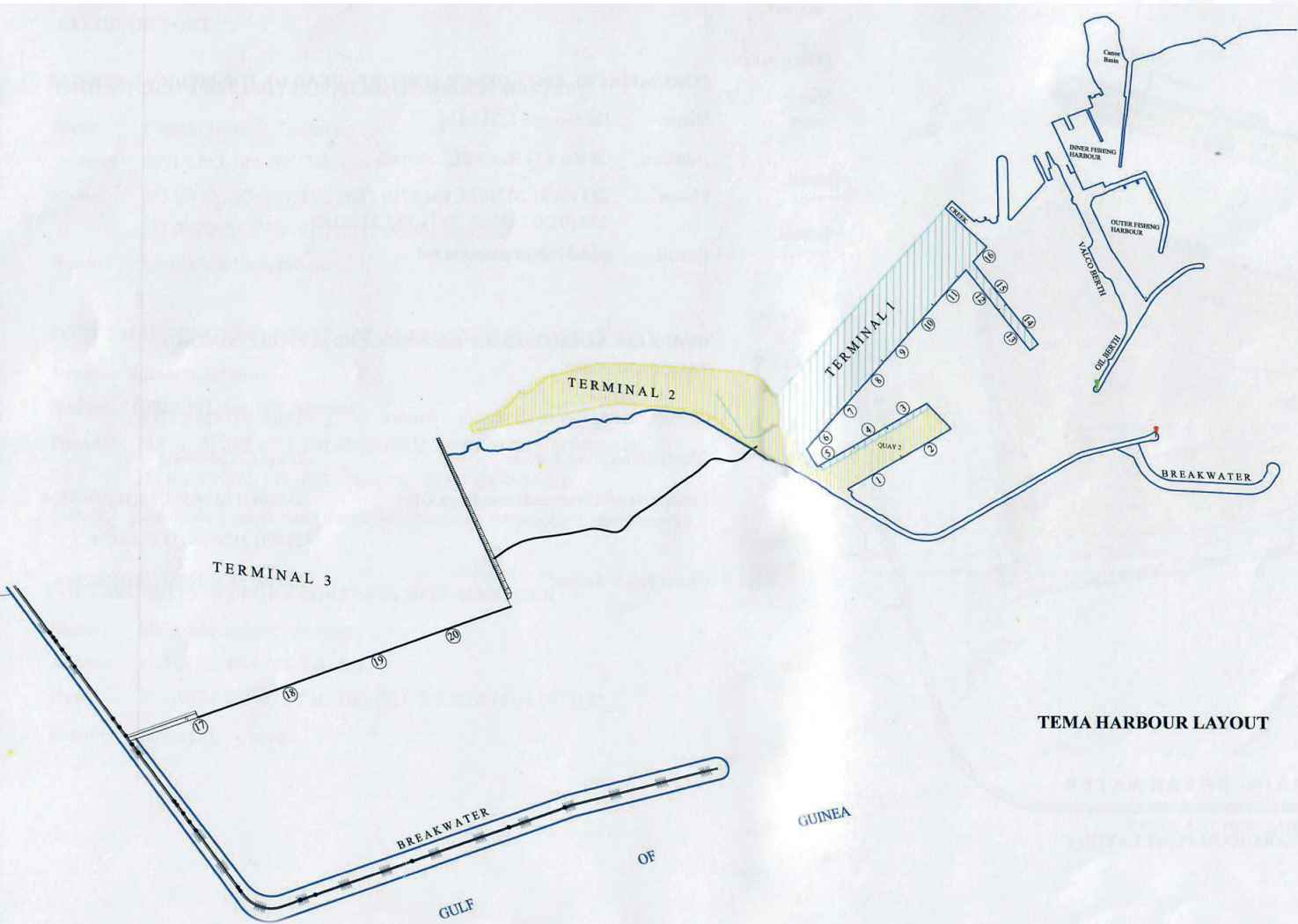
Berth N°	Length (m)	Depth (m)
1	58	3.3
2	55	3.6
3	52	5.2
4	73	4.6
5	73	4.4

Outer Fishing Harbour

- ◆ Total Quay length of 486 metres
- ◆ Capacity to accommodate Tuna vessels and Deep Sea Fish carriers.
- ◆ Depth ranges of 5.0 - 7.0 metres (Chart Datum)
- ◆ Lay-by mooring wharf opposite the main quay
- ◆ Protective water area of approx. 12.5 hectares
- ◆ Entrance is 122 metres wide

Berth N°	Length (m)	Depth (m)
1	61	4.7
2	73	4.9
3	73	5.6
4	76	4.8
5	107	6.1

PORT OF TEMA MAP



We are certified for TRACE
ISO 9001:2015
ISO 14001:2015
ISO 45001:2018

